

## Kromek K101-Source



NETPark Thomas Wright Way Sedgfield County Durham TS21 3FD UK  
T: +44 (0) 1740 626060 F: +44 (0) 1740 626061 E: sales@kromek.com W: www.kromek.com



## Kromek K101-Source

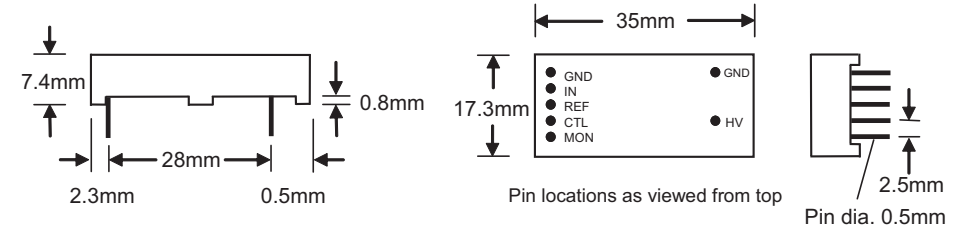
Low-power, low-noise, regulated high-voltage supply for biasing detectors



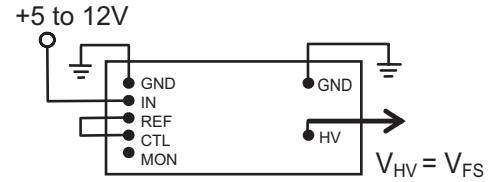
### Features

- Low power: < 2 mA quiescent current
- Wide input voltage range : +5 to +12 V
- Low noise: < 100  $\mu$ V p-p ripple
- Low EMI - no magnetic components
- Small size: 35mm x 17mm x 7mm
- Voltage-controlled output
- Built-in reference and output voltage monitor

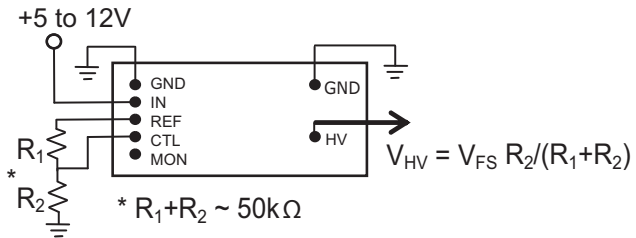
Part number	Full-scale output voltage ( $V_{FS}$ )	Max. current output
PHV600P	+600V	5 $\mu$ A
PHV600N	-600V	5 $\mu$ A
PHV1200P	+1200V	2 $\mu$ A
PHV1200N	-1200V	2 $\mu$ A
Pin	Function	
GND	Ground (connected to case)	
IN	Input (+5 to +12 V)	
CTL	Control voltage input ( $V_{CTL}$ ), 0 to 4.096V	
MON	Voltage monitor output ( $V_{MON}$ ) = $ V_{HV}  / 1000$	
HV	High voltage output ( $V_{HV}$ ) = $V_{FS} V_{CTL} / 4.096V$	



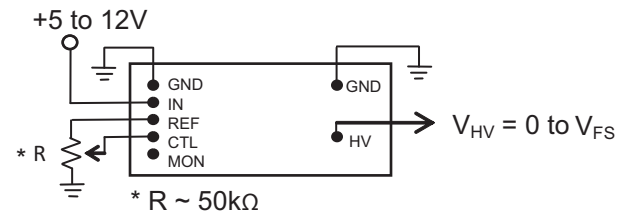
### Fixed output (full-scale voltage)



### Fixed output (full-scale voltage)



### Variable output



### Voltage-controlled output

